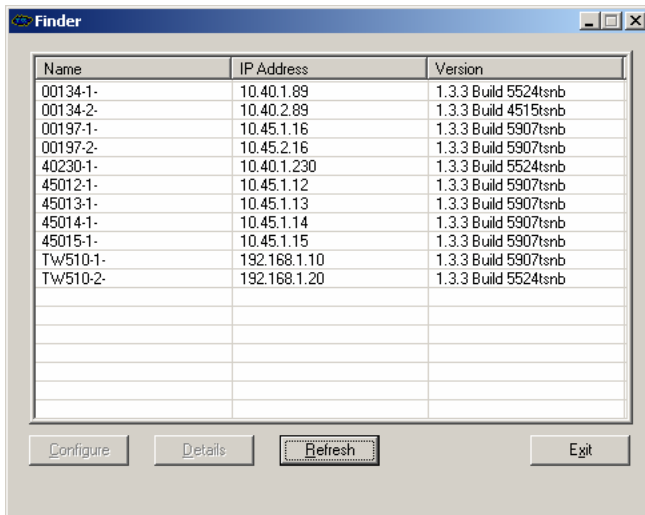


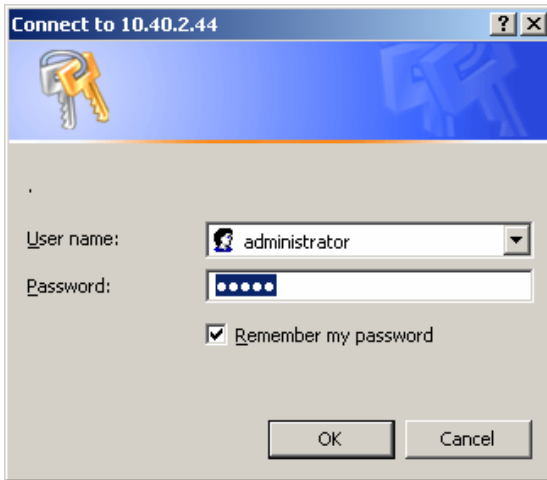


TSS Finder Program Basic System Setup

1. Connect to the TW4-LB system by either the TSS Wireless Server or a laptop using the Ethernet port with a cat5 Ethernet cable located in bottom right corner.
2. From the desktop of the laptop double click on the “TSS Finder” program and the following window will appear showing which systems are connected. It shows the recorders’ that you are connected to.



3. Double click on the Railcar #/name to open the program security page.



User name: **administrator**
Password: **admin**

If it is already filled out click ok.

4. The program will show live video of the cameras. A blue camera screen means the camera is not functioning. When finished click on exit in upper right corner.



System Setup for New Railcar/Vehicle ID

1. Click on Tool Box icon

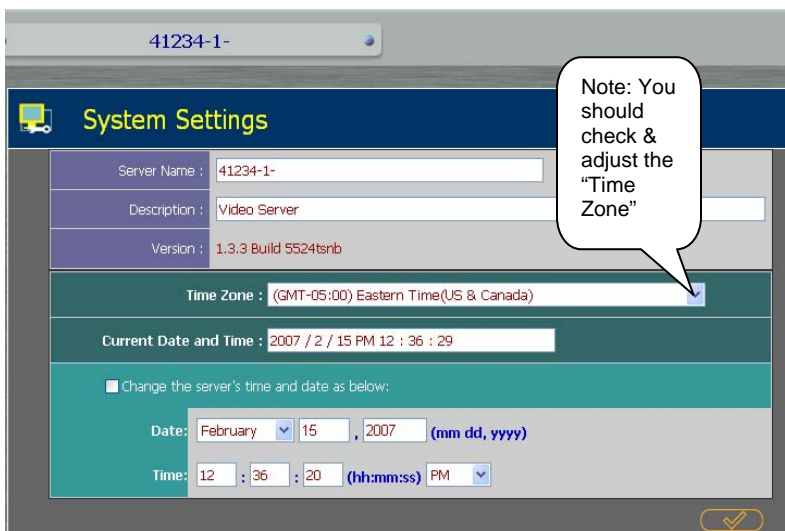


- 2.



Use this window to select operation to be perform.

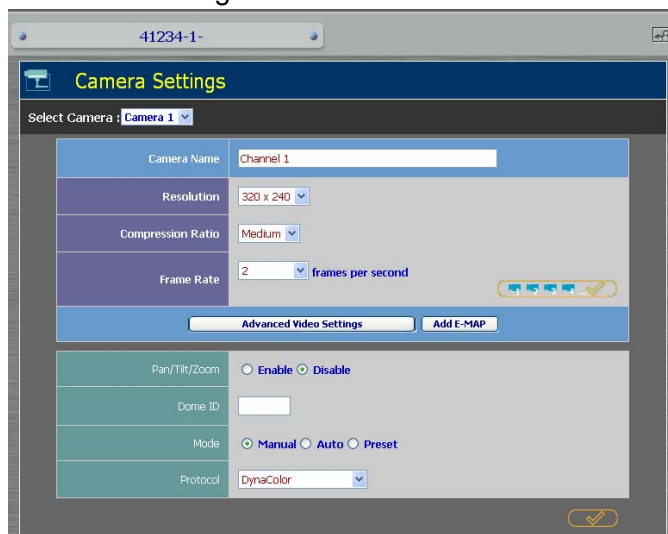
3. System Setting-



The screenshot shows the 'System Settings' page for railcar 41234-1-. The page includes fields for Server Name (41234-1-), Description (Video Server), and Version (1.3.3 Build 5524tsnb). The Time Zone is set to (GMT-05:00) Eastern Time(US & Canada). The Current Date and Time is 2007 / 2 / 15 PM 12 : 36 : 29. There is a checkbox for 'Change the server's time and date as below:' which is currently unchecked. Below this, there are fields for Date (February 15, 2007) and Time (12 : 36 : 20 PM). A callout bubble points to the Time Zone dropdown with the text: 'Note: You should check & adjust the "Time Zone"'. A checkmark icon is visible at the bottom right of the form.

Note current name is 41234-1-. The can be changed in the "Server Name" box to the new railcar number that the system is being installed into. For example railcar #401 would be entered as 00401-1-. You must use the dash before and after eng 1 or eng 2 number. Reminder check time zone & date.

4. Camera settings:



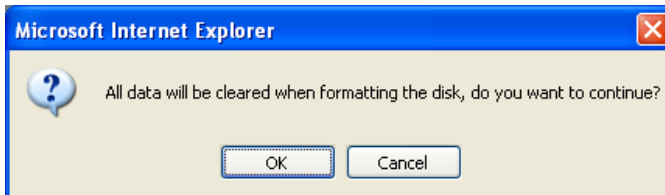
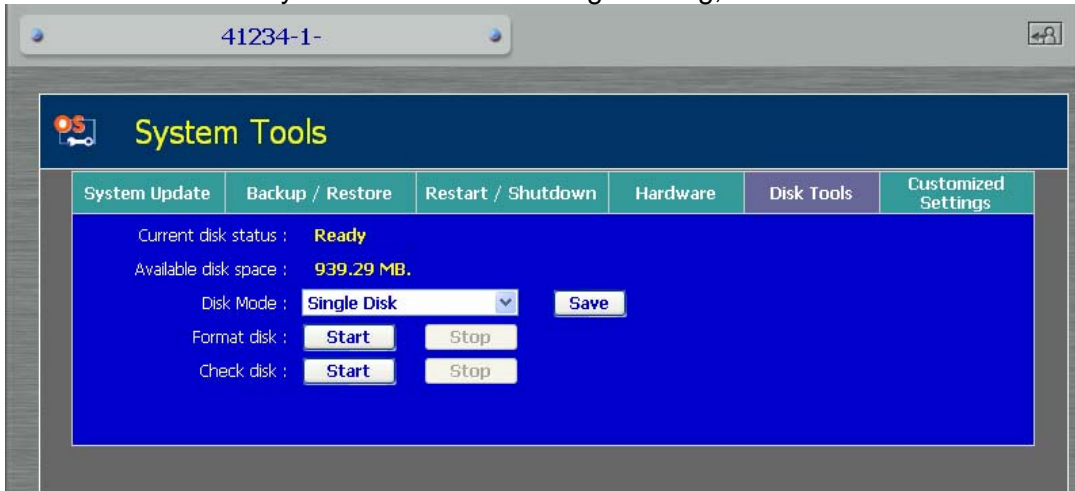
The screenshot shows the 'Camera Settings' page for Camera 1. The page includes fields for Camera Name (Channel 1), Resolution (320 x 240), Compression Ratio (Medium), and Frame Rate (2 frames per second). There are buttons for 'Advanced Video Settings' and 'Add E-MAP'. Below these, there are radio buttons for 'Pan/Tilt/Zoom' (Enable/Disable), a text field for 'Dome ID', radio buttons for 'Mode' (Manual/Auto/Preset), and a dropdown for 'Protocol' (DynaColor). A checkmark icon is visible at the bottom right of the form.

Select the camera, resolution, frame rate then click the single check mark for each camera. If all are cameras are being set to the same settings click on the four camera check mark.

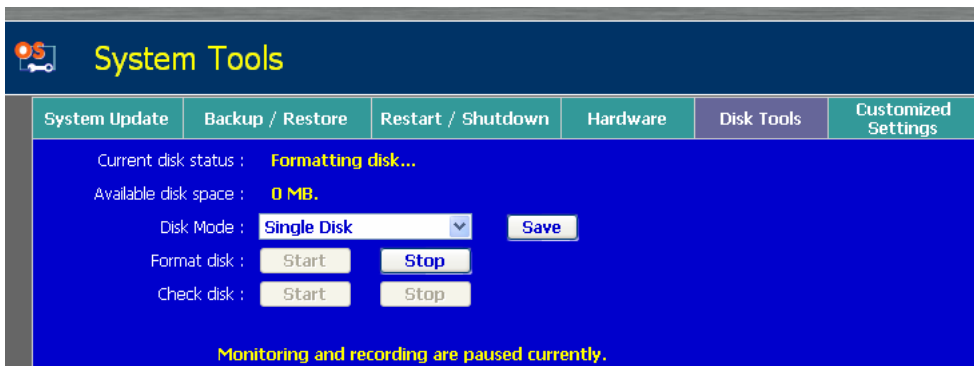
5. Format Hard Drive:

Format the hard drive in eng 1 in order set up the new recording file folders. If this is not done thier will not be sufficient hard drive space to record the video. Select “System Tools” then “Disk Tools” for the following window.

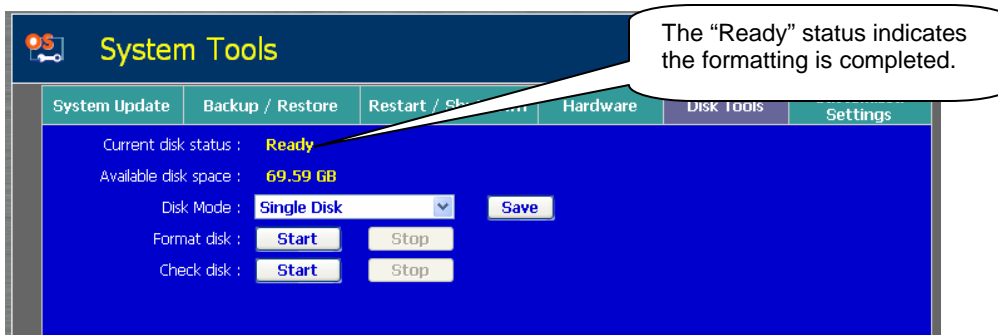
Select “Format Disk” you will see the following warning, Select OK.



The following window will say:



The disk ready will be displayed when completed (Note-if you get a “disk error” message just reselect the “Start” button again) this is normal and should reformat the drive.



Click on the back arrow to exit.

